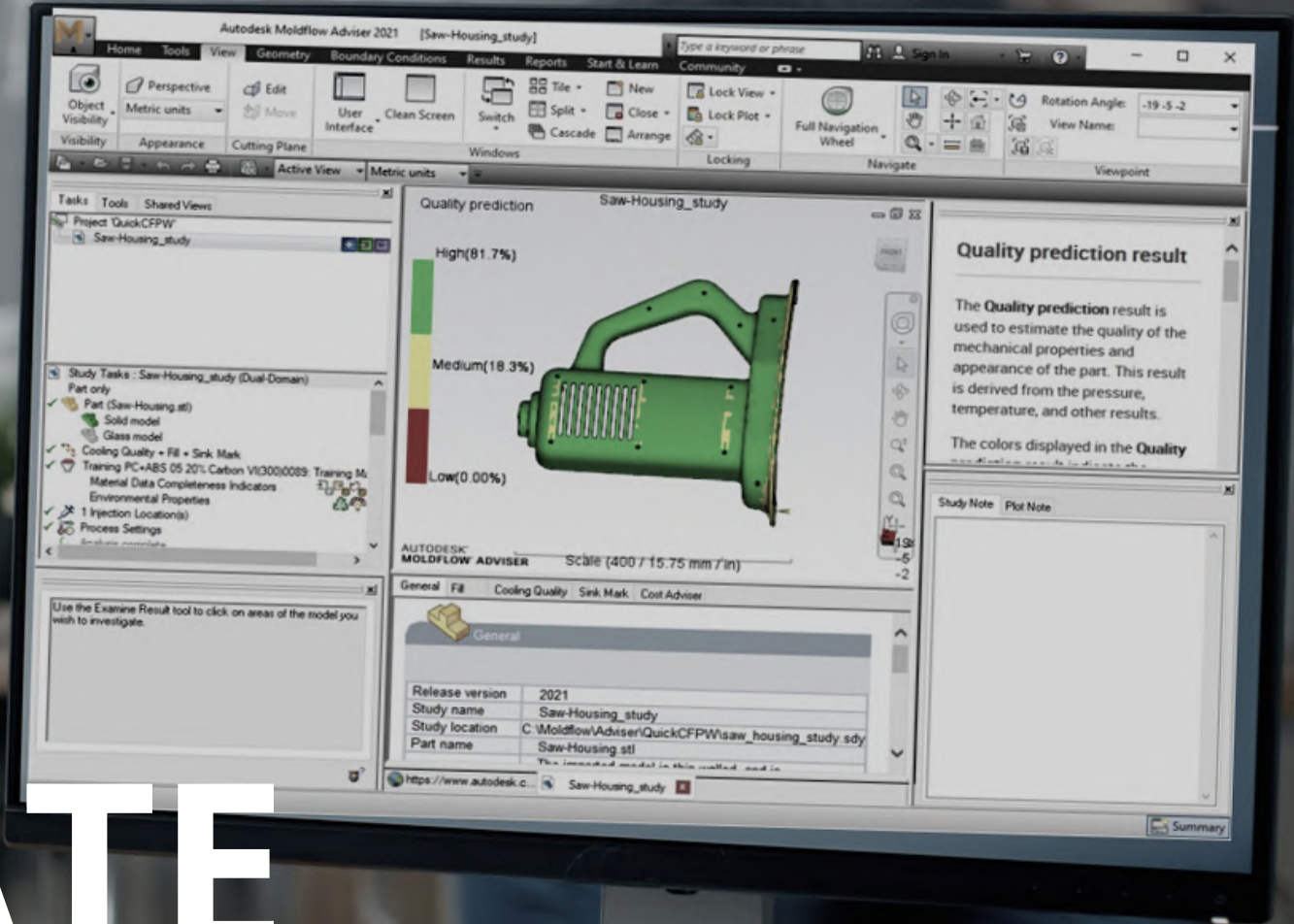


Presented by  
**BRIGHTWORKS ENGINEERING**



# CORPORATE PRESENTATION

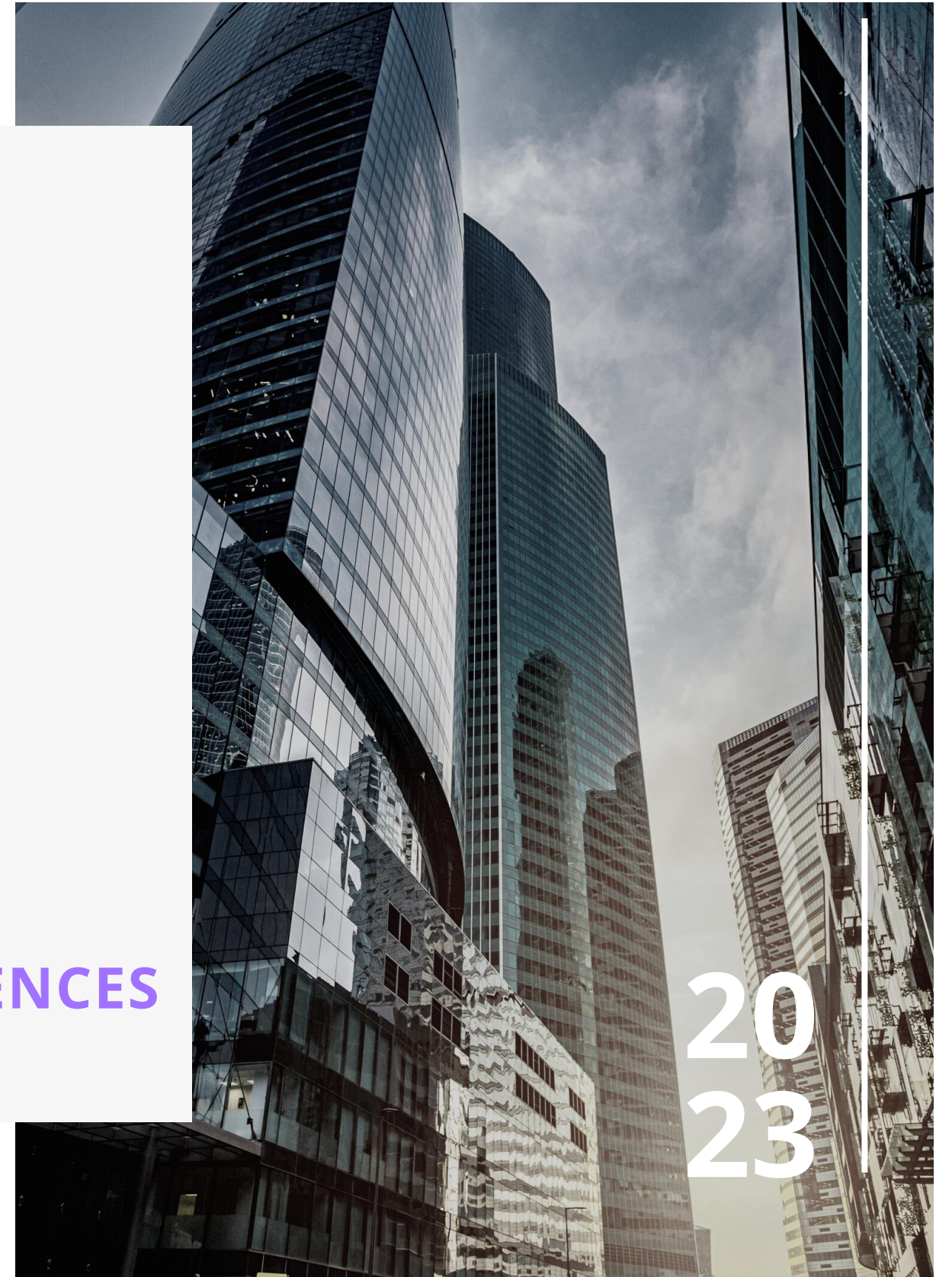
20  
23

*molding the future...*

# TABLE OF CONTENTS

- COMPANY PROFILE
- SERVICES
- WHAT WE DO
- EVENTS
- PRODUCTS
- PARTNERS & REFERENCES

20  
23



# COMPANY PROFILE

Brightworks is a well qualified engineering company offering products and services solely to plastic injection molding industry with a strong global partnership. Brightworks today offers its solutions from automotive to white goods, packaging to medical plastics world with a respected fame.





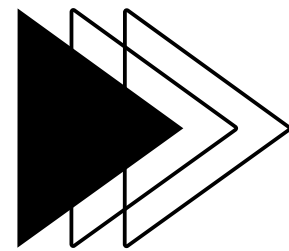
# VISION

Brightworks Engineering is dedicated to innovation in plastic injection molding to offer value-added and technology-driven products and services to its customers to help them to create a sustainable growth in their field with highly science-oriented that makes them competitive then ever. With this philosophy, Brightworks also contribute to the World by decreasing the carbon foot print, reducing the waste and saving the energy of its customers.

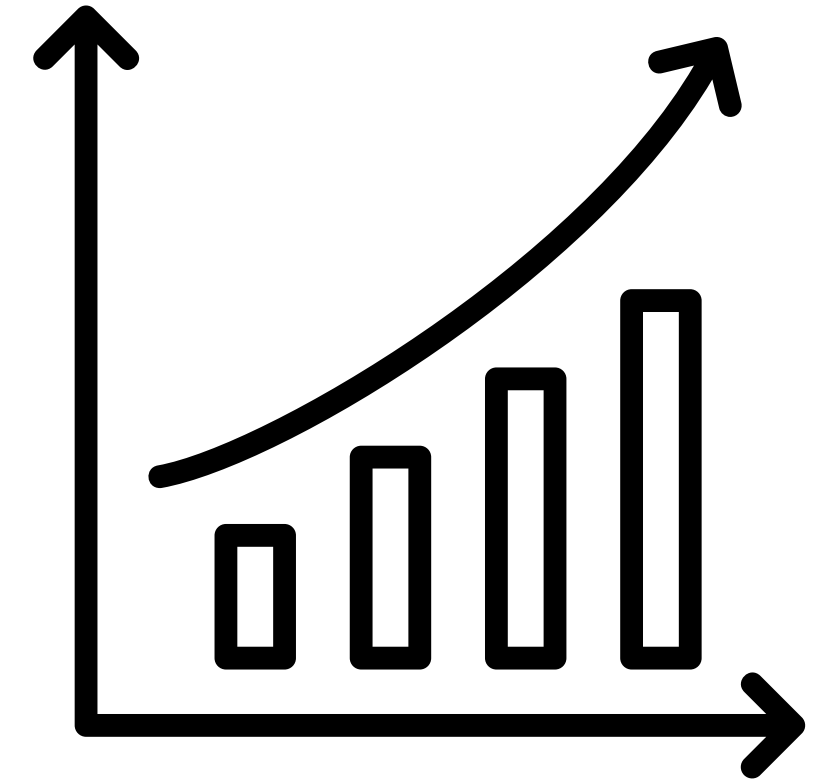
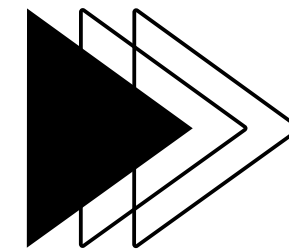
# WHAT WE DO ?



**check**

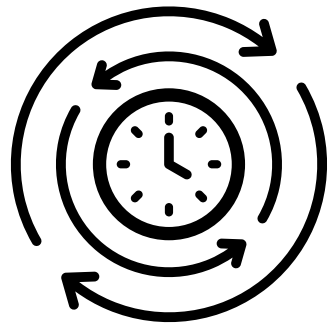


**action**

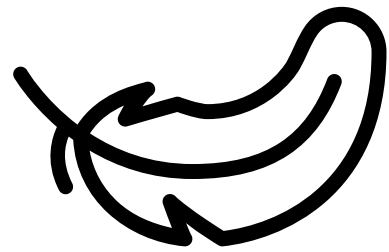


**result**

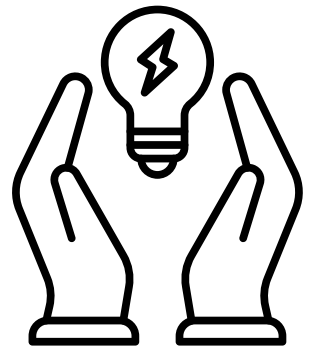
# ADDED VALUES



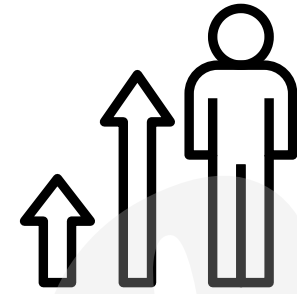
**CYCLE TIME REDUCTION**



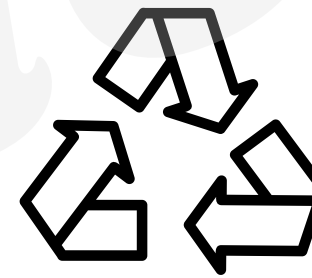
**WEIGHT REDUCTION**



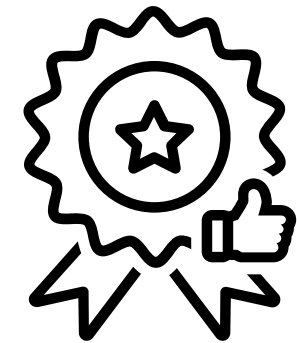
**ENERGY SAVING**



**MANPOWER DEVELOPMENT**



**RECYCLING EFFICIENCY**

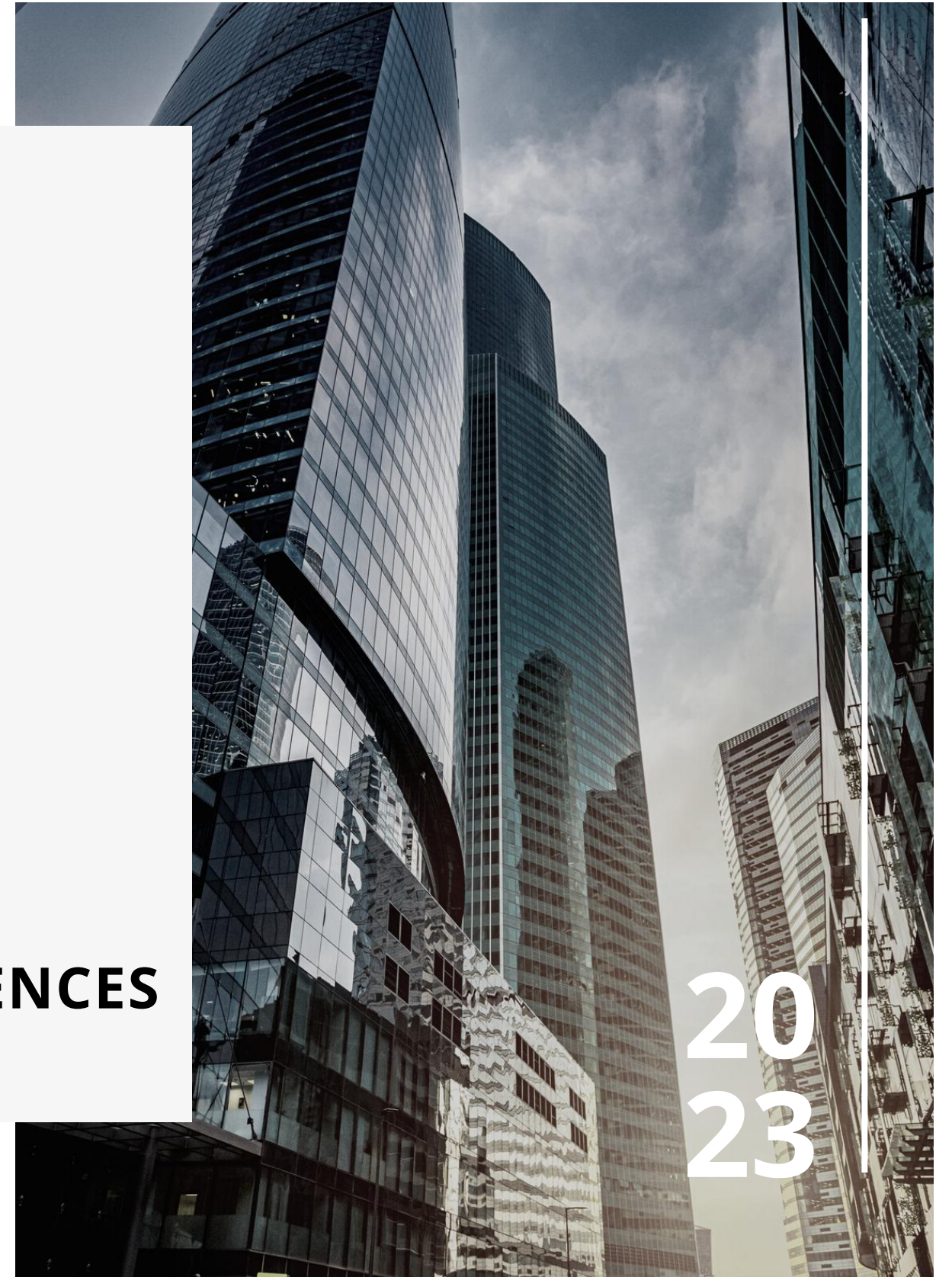


**QUALITY IMPROVEMENT**

# TABLE OF CONTENTS

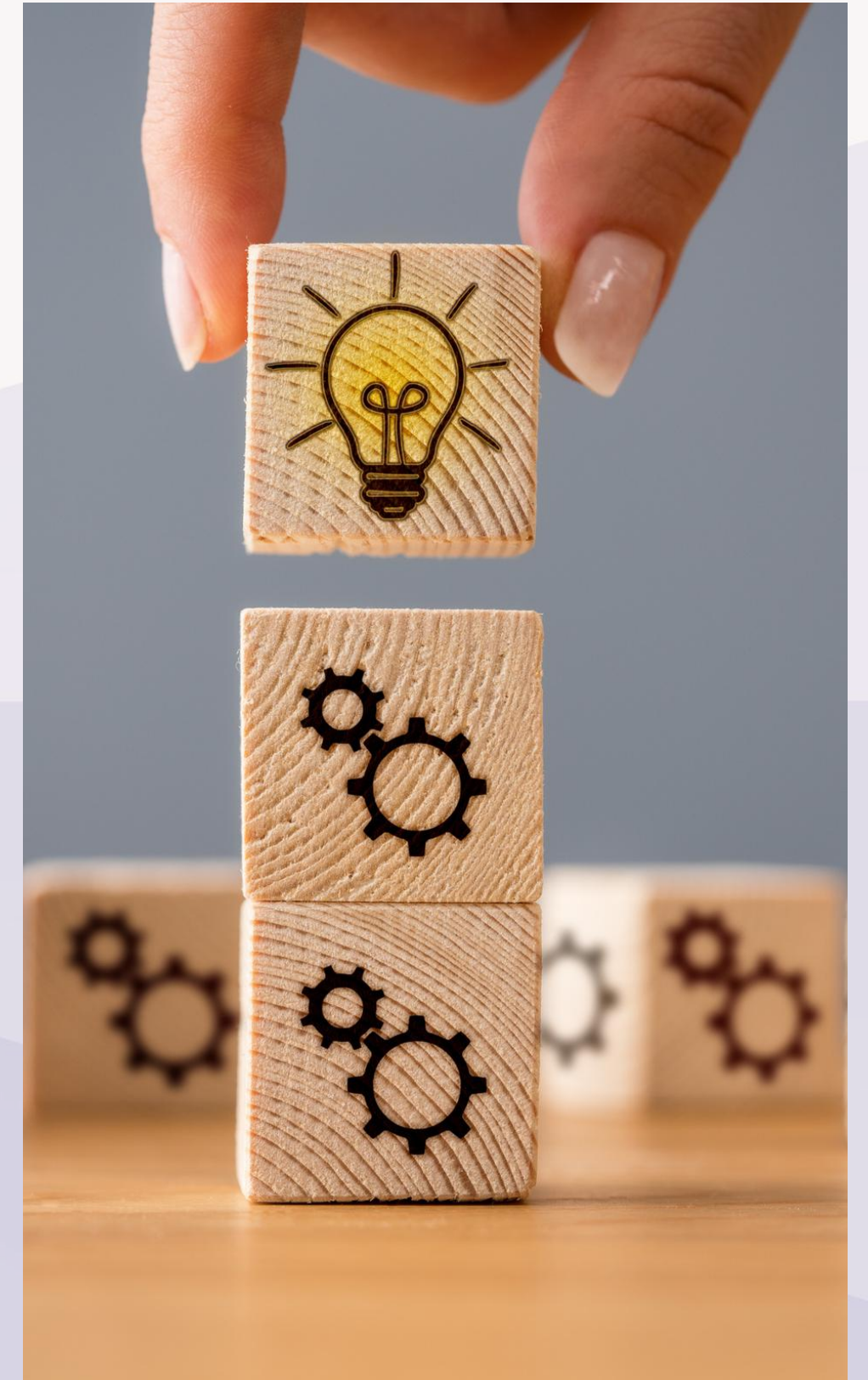
- COMPANY PROFILE
- WHAT WE DO
- **PRODUCTS**
- SERVICES
- EVENTS
- PARTNERS & REFERENCES

20  
23



# PRODUCTS

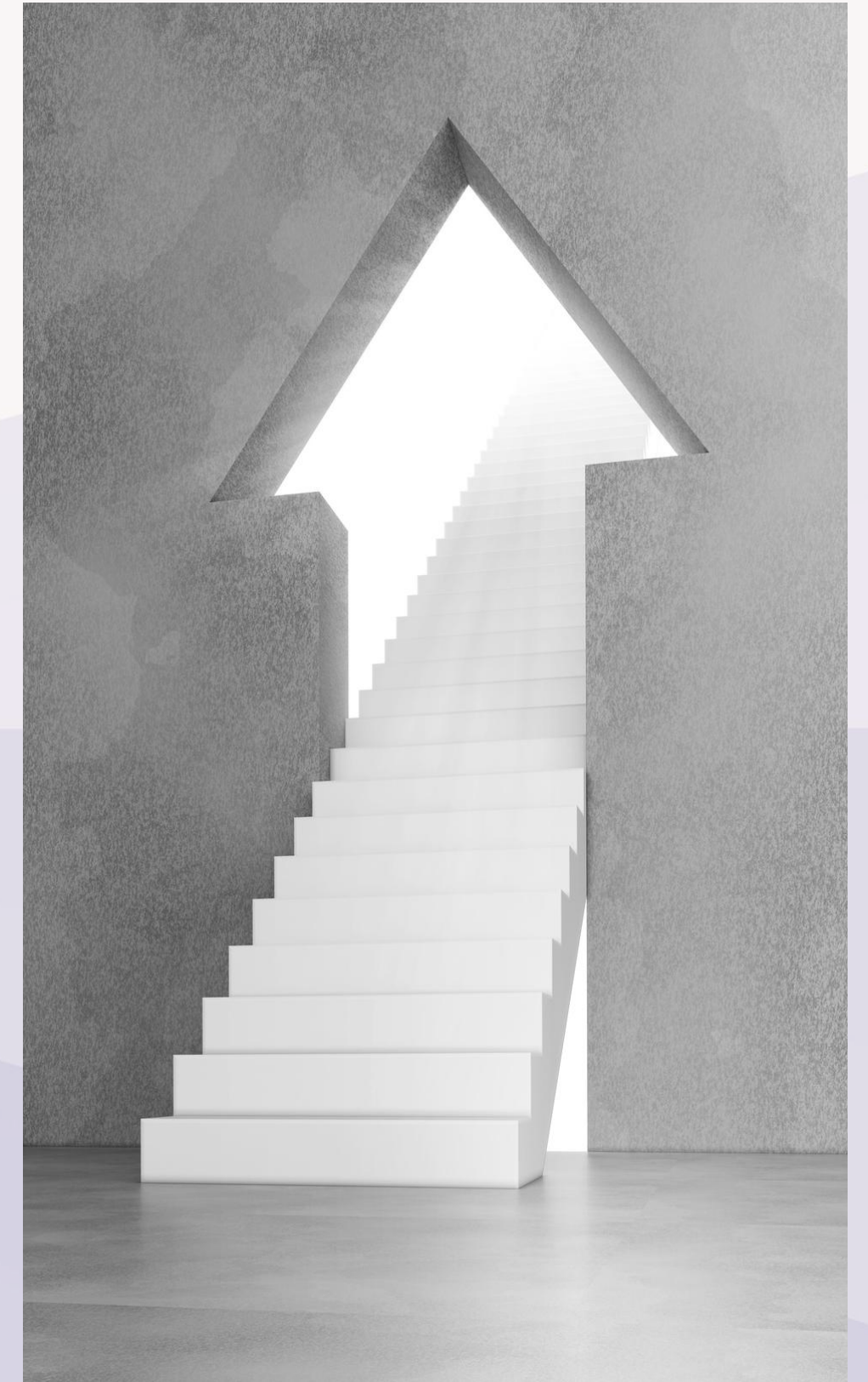
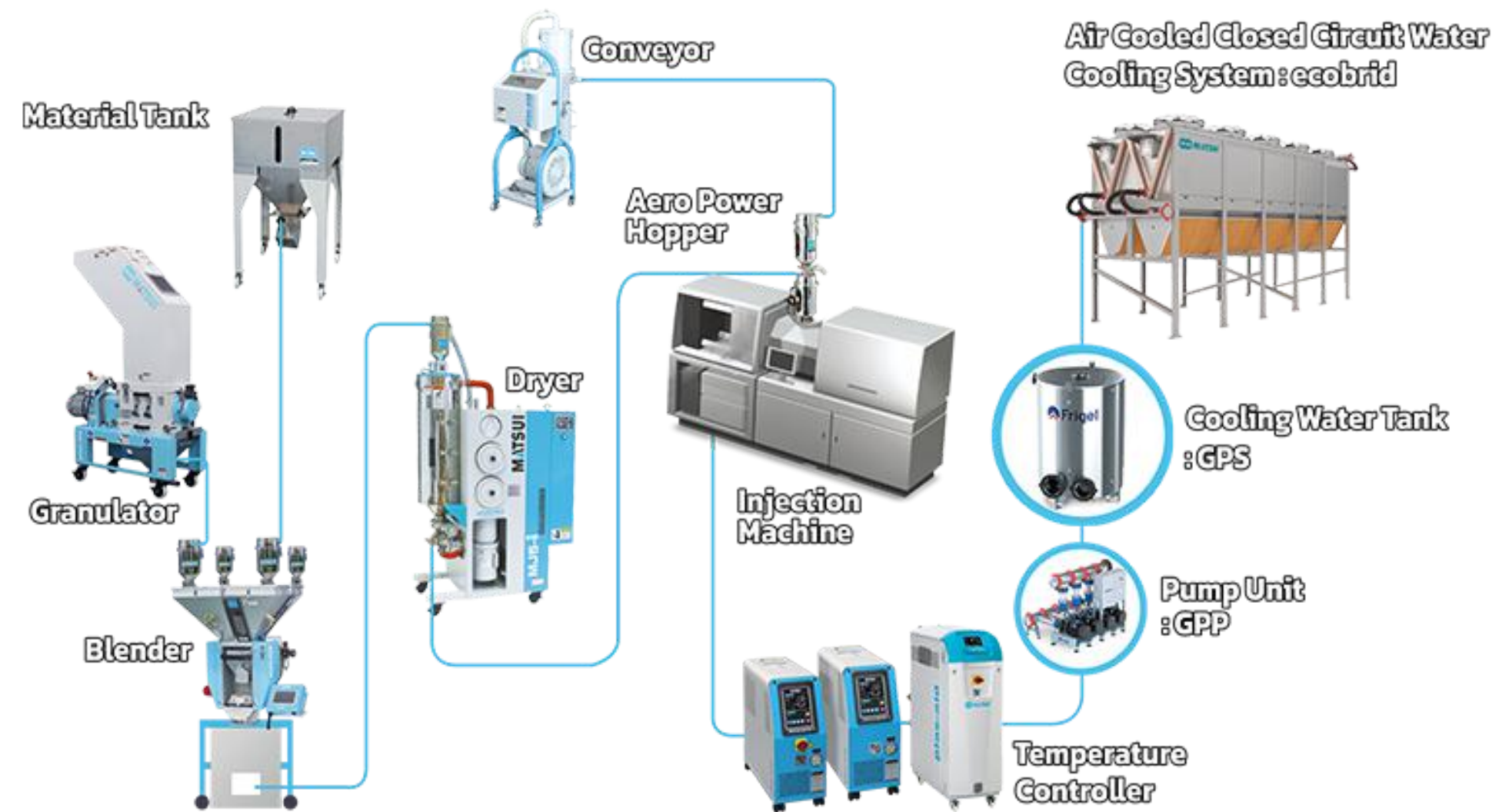
*STANDARD MOLD COMPONENTS*





# PRODUCTS

## MOLDING AUXILLARIES



# PRODUCTS

*COOLING SOLUTIONS*



# PRODUCTS

VARIOTHERMAL MOLDING



Clear Injection  
Point



Problem-free  
Filling



No Sink  
Mark



No Visible  
Weld Lines

**BRIGHTWORKS ENGINEERING**

[www.brightworksengineering.com](http://www.brightworksengineering.com)



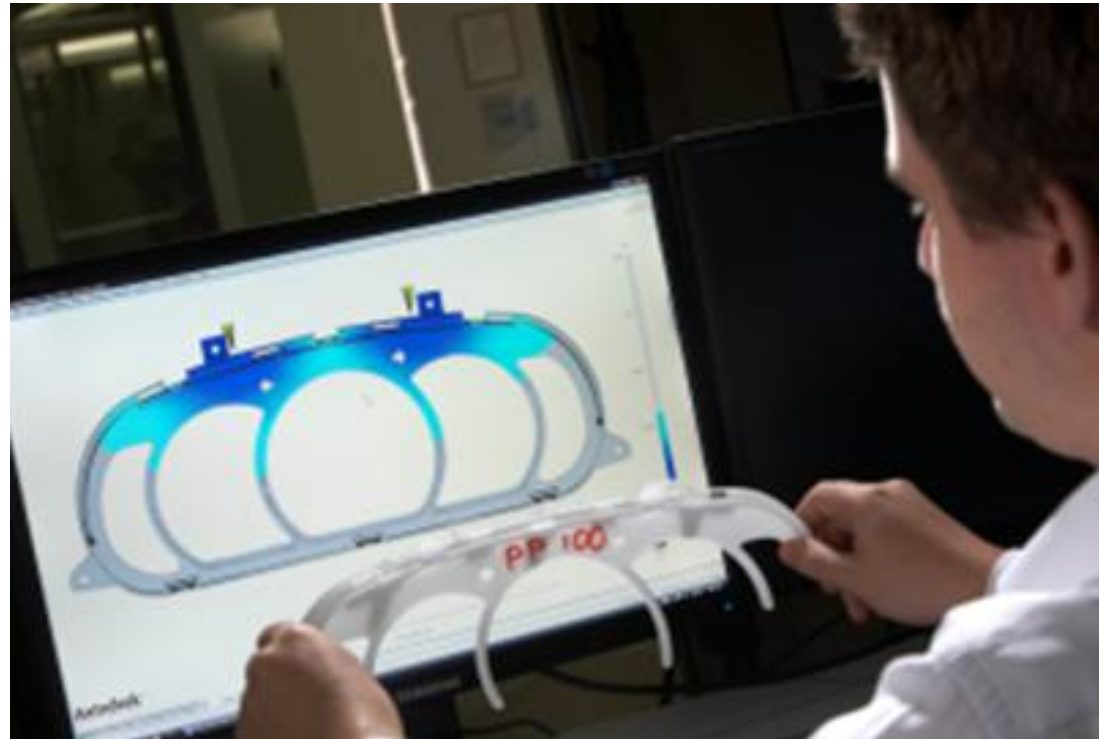
# TABLE OF CONTENTS

- **COMPANY PROFILE**
- **WHAT WE DO**
- **PRODUCTS**
- **SERVICES**
- **EVENTS**
- **PARTNERS & REFERENCES**

20  
23



# SERVICES



## Molding Simulation

Moldflow & Structural Simulation



## Product Development

Product & Mold Design Optimization



## Process Optimization

On Site Process Parameter DOE

# TRAININGS

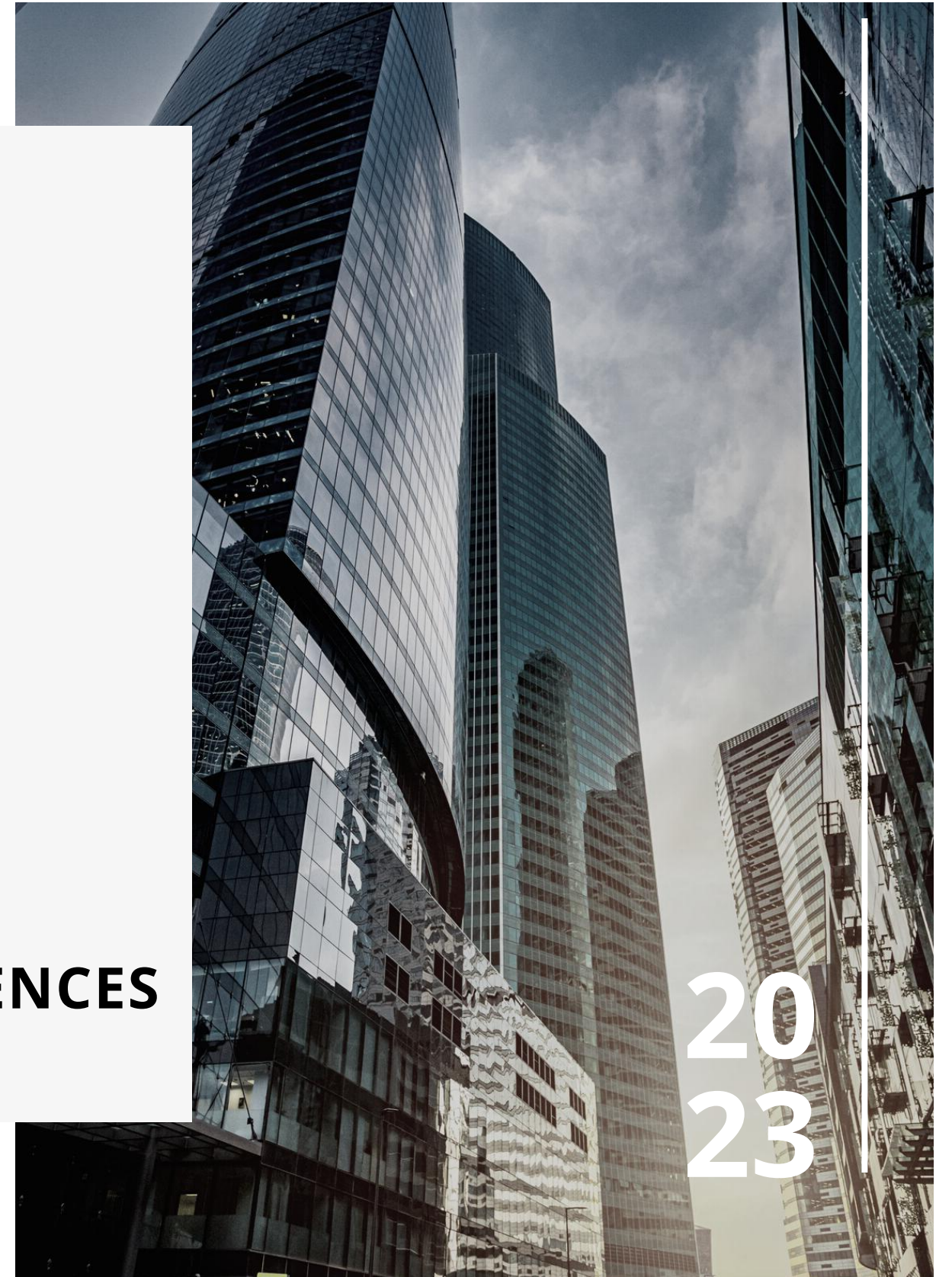
- Basics of Injection Molding Process
- Injection Molding Economics
- Injection Molding Basics for Operators
- Part Design & Optimization Principles
- Mold Design Principles
- Process Parameters & Affects
- Mold Temperature Management
- Shrinkage & Warpage
- Trouble Shooting
- Scientific Molding & DOE
- Moldflow Results Interpretation
- Moldflow Parameters Set-up to Molding Machine



# TABLE OF CONTENTS

- **COMPANY PROFILE**
- **WHAT WE DO**
- **PRODUCTS**
- **SERVICES**
- **EVENTS**
- **PARTNERS & REFERENCES**

20  
23



# LUNCH&LEARN

## International Injection Molding Conference

**LUNCH & LEARN UB 2022**  
Türkçe Simultane Çeviri

»» 8th International Injection Molding Conference  
»» 8. Uluslararası Plastik Enjeksiyon Kalıplama Konferansı  
»» 31.05.2022  
Crowne Plaza İstanbul Asia  
»» key theme: LSR Molding  
ana tema: LSR Kalıplama

sponsored by  
**eurotec**

**brightworks** ENGINEERING  
Plastic Injection and Moulding Solutions  
**ENGEL**

### Program of the day

08.00 - 09.15	Welcome - Reception - Registration
09.15 - 09.30	<b>Welcome Words</b> Mahir Ziyrek, Board Member Brightworks Engineering Abdulkadir Topuçar, General Manager ENGEL Türkiye
09.30 - 10.00	<b>Critical Parameters in Molding Machine Selection for LSR Molding</b> Thomas Gradl, Area Sales Manager Engel Austria GmbH
10.00 - 10.30	<b>Sustainable Material Solutions for a Circular Economy</b> Esra Başaran, R&D Project Manager Eurotec Engineering Plastics
10.30 - 11.00	<b>Optical Lenses Made by Thermoplastics vs LSR Molding</b> Matthias Militich, Research & Development Kunststoff-Institut Lüdenscheid GmbH
11.00 - 11.30	<b>Morning Refreshment, Networking, Exhibition</b>
11.30 - 12.00	<b>Easier and Faster Mold Setups with Quick Clamping Elements</b> Erol Semiz, Group Manager Strack Norma GmbH
12.00 - 12.30	<b>Dynamic Thermal Management to Produce High-Precision Optical Lens</b> Joern Sengelau, Head of Sales, Contura MTC GmbH Jens Schnettler, Sales Manager, Cycle Temp GmbH
12.30 - 13.30	<b>Lunch Break</b>
13.30 - 14.00	<b>Understanding the Science Behind Troubleshooting of Thermoplastics Molding Defects</b> Sahas Kulkarni, President Firmtech Inc.
14.00 - 14.30	<b>Identifying Quality Problems with Autodesk Moldflow in LSR Molding Before They Appear</b> Sven Theissen, General Manager MF Software TR
14.30 - 15.00	<b>Smart Molding Factories: The Future of Plastic Injection Molding with 4.0 Integration</b> Kazuki Sasahara, General Manager Matsui MFG Europe
15.00 - 15.30	<b>Afternoon Refreshment, Networking, Exhibition</b>
15.30 - 16.00	<b>Time Saving Data-Driven Molding Trial Optimization</b> Barış Bozkurt, General Manager Brightworks Engineering
16.00 - 16.30	<b>Locking Cylinders for High Precision Part Production</b> Ricardo Lopes, Sales Manager AHP Merkle GmbH
16.30 - 17.00	<b>Towards Autonomous Injection Moulding Production</b> Thomas Gradl, Area Sales Manager Engel Austria GmbH
17.00 - 17.15	<b>Wrap-Up &amp; Closing</b>
17.30 - 19.30	<b>Wine &amp; Cheese Cocktail</b>





# CONNECT! MENAR

International Autodesk Moldflow Conference



**AUTODESK**  
Reseller

**connect**  
MENAR  
22

Türkçe Simultane Çeviri

Autodesk® Moldflow® User Conference  
Autodesk® Moldflow® Kullanıcı Konferansı

15.12.2022  
Workinn Hotel, Gebze

powered by **MFS TR**  
mold your ideas right...  
www.moldflowtr.com

## Program of the day / Günün Programı

08.30 - 09.30	Welcome - Reception - Registration Karşılama - Kayıt - Kahvaltı
09.30 - 09.40	Welcome Words / Hoşgeldiniz Mahir Ziyrek / Sven Theisen - MF Software TR
09.40 - 10.00	Future of Making Things Üretimin Geleceği ve Autodesk'in Üretim Yaklaşımı Murat Tüzüm - Autodesk Türkiye
10.00 - 10.30	ENGEL Sim Link® - Connection Between Two Worlds: Simulation and Production Engel Sim Link® - Simülasyon ve Üretim Arası Köprü! Vladimir Rymarcuk - Engel Austria Gmbh
10.30 - 11.00	"How Real is Your Simulation?" Evaluating the Accuracy of Moldflow Results with Case Studies Simülasyonların Gerçeği Ne Kadar Yansıtıyor? Örnek Vakalar ile Moldflow Sonuçlarının Tutarlılığı Sumru Ünlüevcek - MF Software TR
11.00 - 11.30	Morning Refreshment, Networking, Exhibition Kahve Molası, Bağlantı Edinme, Fuar
11.30 - 12.00	Simulation and Reality - Experiences from Validation Dräxlmaier Presentation Simülasyon ve Gerçeklik: Dräxlmaier Validasyonu Sven Theissen - MF Software TR
12.00 - 12.30	Chemical Foaming with Autodesk Moldflow & TecoCELL Autodesk Moldflow ile Kimyasal Köpürtme ve TecoCELL Burak Eyleneoğlu - MF Software TR
12.30 - 14.00	Lunch Break / Öğle Yemeği
14.00 - 14.30	Optimization with Optical Measurements and Reverse Engineering Optik Ölçüm ve Tersine Mühendislik ile Optimizasyon Dr. Sebastian Moennich - PEG Gmbh
14.30 - 15.00	What's New in Autodesk Moldflow 23 Autodesk Moldflow 2023 Yenilikleri Burak Eyleneoğlu - MF Software TR
15.00 - 15.30	Afternoon Refreshment, Networking, Exhibition Kahve Molası, Bağlantı Edinme, Fuar
15.30 - 16.00	Process Optimization with Moldflow: Case Studies by Design of Experiment D.O.E. Moldflow ile Proses Optimizasyonu: Deney Seti Tasarımı Üzerine Örnek Vaka İncelemeleri Sumru Ünlüevcek - MF Software TR
16.00 - 16.30	Autodesk Moldflow Tips & Tricks Autodesk Moldflow İpuçları ve Püf Noktaları Tamer Önder - MF Software TR
16.30 - 16.45	Tombola & Special Offers Çekiliş
16.45 - 17.00	Wrap-up & Closing Kapanış
17.30 - 19.30	Wine & Cheese Cocktail Kokteyl: Şarap ve Peynir



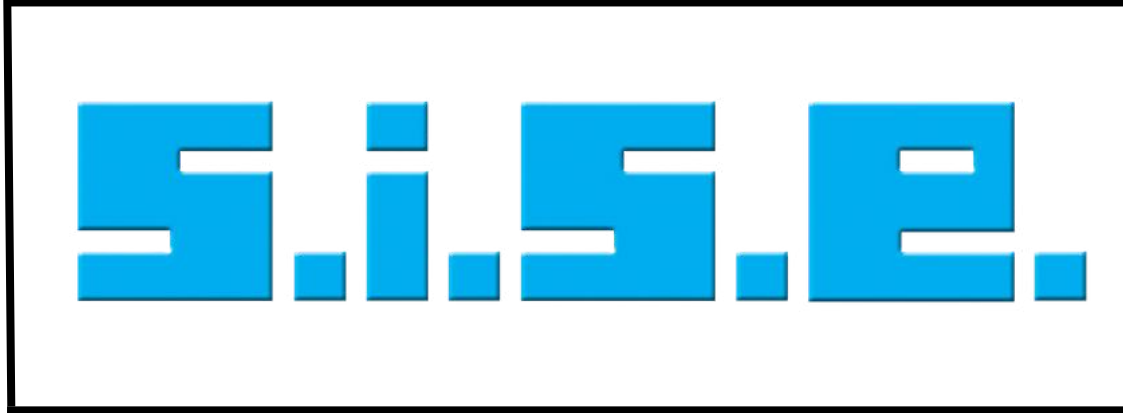
# TABLE OF CONTENTS

- **COMPANY PROFILE**
- **WHAT WE DO**
- **PRODUCTS**
- **SERVICES**
- **EVENTS**
- **PARTNERS & REFERENCES**

20  
23



# OUR PARTNERS



# SOME REFERENCES





# GET IN TOUCH



+90 216 515 68 80



www.brightworksengineering.com



info@bwetr.com



Şekerpınar Mah. Tepeören Cad.  
Tuzla Plus No:18 / 41  
41420 Çayırova / Kocaeli / Türkiye



**BRIGHTWORKS ENGINEERING**